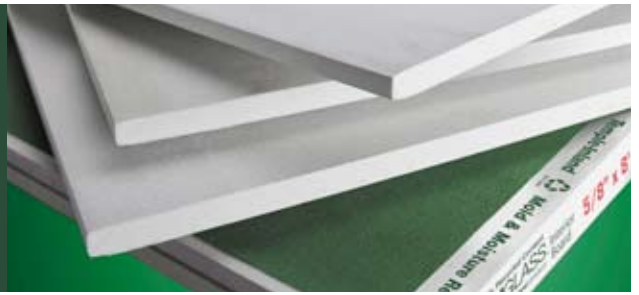


GREENGLASS® Interior Gypsum Board

a Temple-Inland product



Project Profile



BASIC INFORMATION

Project Name

Round Rock ISD Tech Center

Location

Round Rock, TX

Square Footage

17,920 of GreenGlass

Architect

GS&C Architecture

General Contractor

Turner Construction

Drywall Contractor

Lasco Acoustics and Drywall



www.templeinland.com | 800-231-6060

©2009 TIN, Inc. Temple-Inland and GreenGlass are registered trademarks of TIN, Inc. 8/09 CS 2143

The 'USGBC Member Logo' is a trademark owned by the U.S. Green Building Council and is used by permission.

TempleInland®